

COULEURS





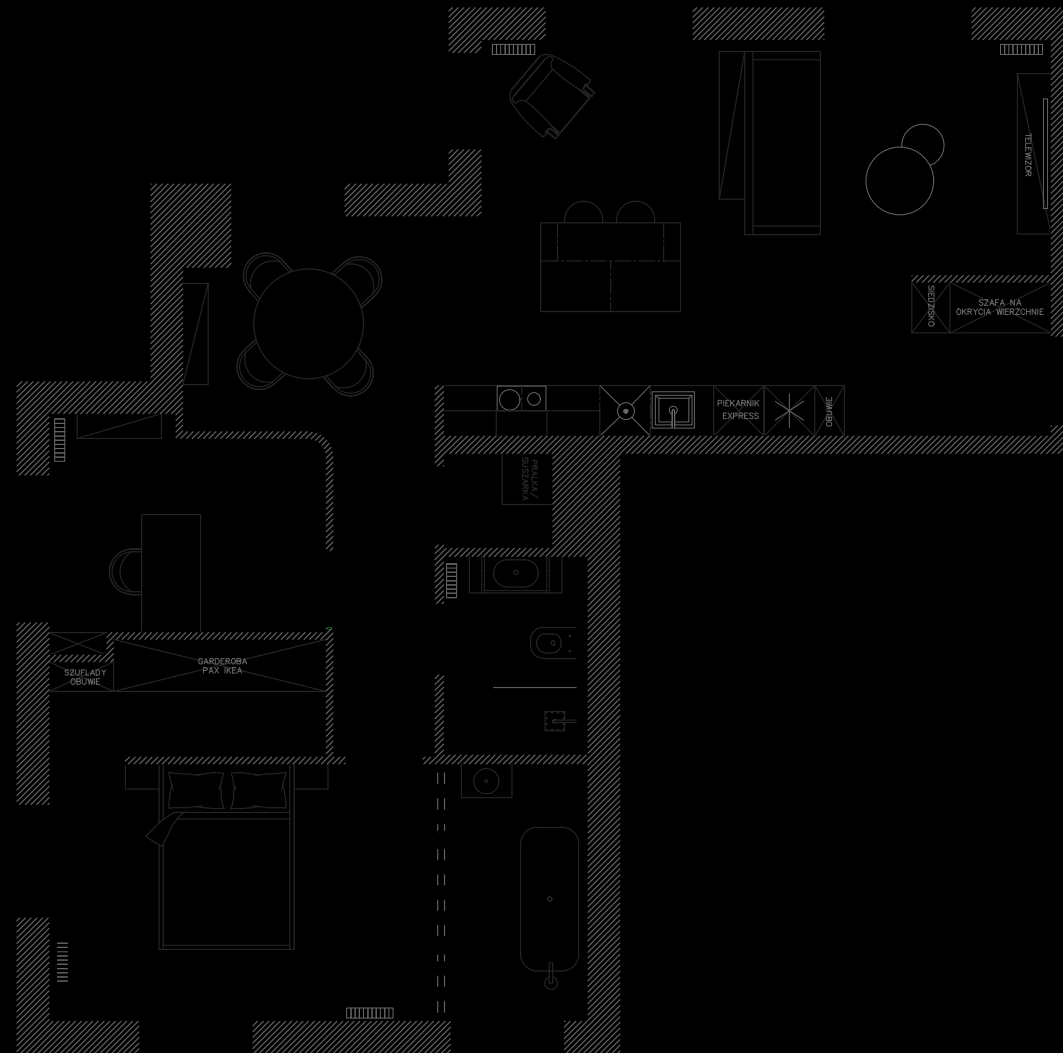
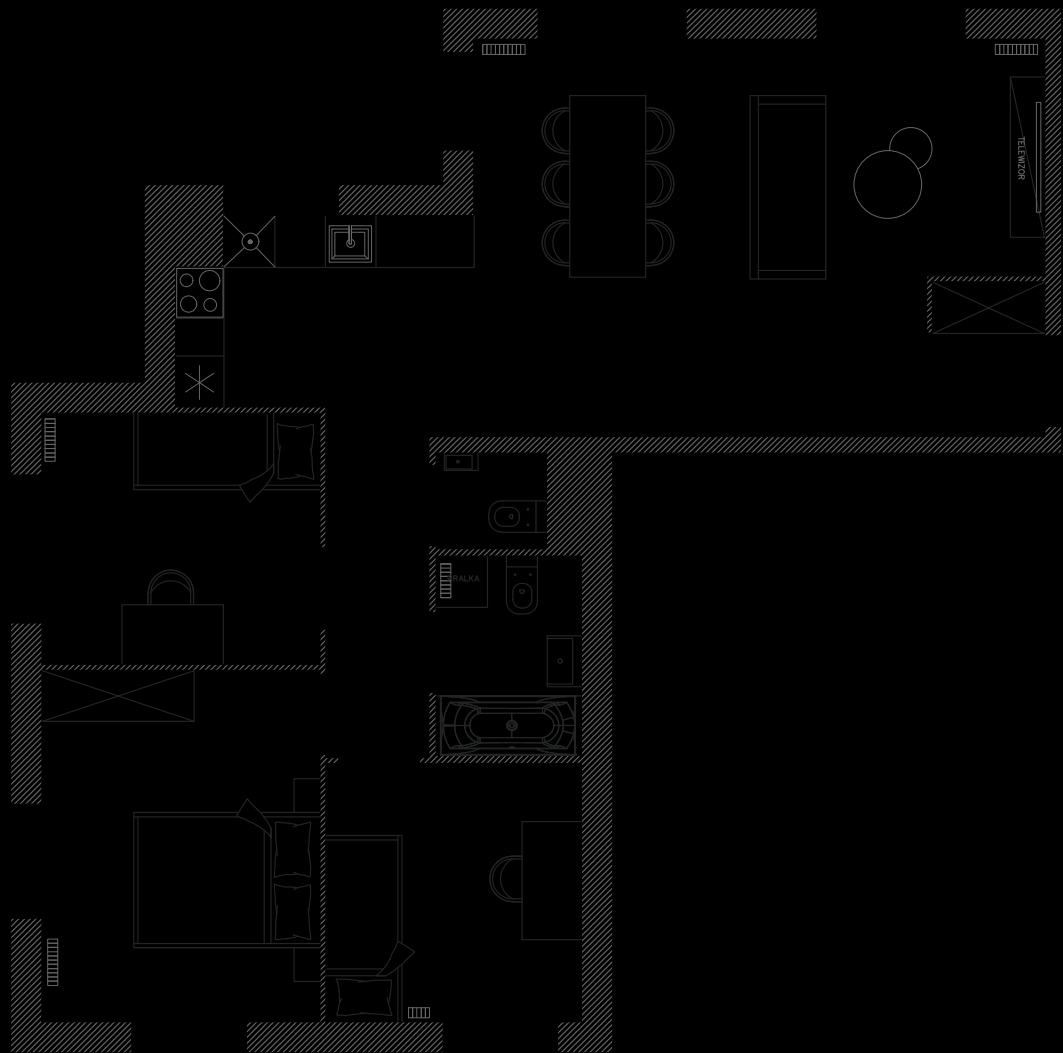
404
STUD.IO

PROJECT: APARTAMENT
LOCALISATION: WARSAW

This project concerns over 70 sq. meters apartment located in Warsaw. Interior was decorated remotely, but owners of apartment still wanted us to perform the first inventory. Expectations were high, especially because one of the investors is a close relative to our previous client, whose house was also remotely designed. It's the best proof for us that our work is so valuable, it can be successfully recommended to the closest relatives.

We have devoted a lot of work in this project to the functional layout of the apartment. The development projection differs significantly from the one proposed to the clients. The kitchen has been moved from the recess to an open space. Investors wanted to obtain an island and increase the working area. The bedroom, on the other hand, was supposed to have a space for a large free-standing bathtub and a hidden wardrobe. However, those details build interior. The most important one in this project is a rounded wall near dining room. A small detail in the functional arrangement but with a large aesthetic effect.







The most important are colors, from the very first time you enter the apartment. A beautiful kitchen in a turquoise color is a view rarely seen indoors. An island in the middle will be a perfect place to prepare favourite dishes and two seats next to it is a zone intended for fast breakfast or just for accompanying the person that cooks.

The partition wall added by us, with built-in wardrobe serves both as a storage and also separates the entrance of the apartment from the seating area. White lacobel placed from the kitchen to the corridor has to be prevent animals from getting it dirty. TV wall in English style, which form goes from one side to another, was separated by black profiles for diversity. This is the reference to the kitchen furniture, where the division is simple and even and cutter is made in the same style. The colors from the furniture of the corridor and the seat go further to the wall, up to the dividing profile so the corridor is seamlessly connected to the TV wall, and the colors harmonize well on the corridor-living room-kitchen line.





404
STUD.10

The common element connecting the entire interior is gold and to a lesser extent black. Those colors play a very crucial role of foundations in the bathroom with the shower and subtle inserts in other rooms. It is an earlier mentioned bathroom that shows how the structure of materials can be used to get the desired effect. The main accent are Marazzi Mystone Lavagne tiles. The producer himself described them as a synthesis of a character and elegance. This is the effect we wanted to achieve, when arranging this room. By using their texture and the backlight of the mirror, we only intensified this effect.





4e4
STUD.IO



4e4
STUD.IO



The final touch in the project is a bathtub in the bedroom – a relaxation zone after a tough day. A relaxation place from the hustle and bustle. For investors, lightning was supposed to be the complement of the space in the entire apartment. So it was with the home bathing zone. We did not use any special form's treatments here, but we focused so that the selected lamps presented a design that matches the interior, while slightly diversifying it. The wallpaper behind the bathtub and the stucco frame emphasize the classic character even more. The metal wall is some kind of a culmination of this part of a room. Stucco adds elegance, and the semi-open wardrobe will improve preparing in the morning for everyday life.

Despite the use of a large number of colours, the whole gives the impression of an elegant or even luxurious interior. On one hand there is a lot happening in space, but on the other, there is no feeling of overcomplicating and overload, which in our opinion is a difficult task when using such a large number of colors, forms and structures.

